

Issue 8 | 01-12-2022

GILLAMII NEWSLETTER

Harvest Edition

**From the
Committee:
Chris Tomlinson**

**Making Every
Drop Count**

**Project Focus: MLA
Saltland Producer
Demonstrations**

Image Credit: Jo Ashworth



INSIDE THIS ISSUE

From the Committee

Chris Tomlinson

NRM News

NRM Officer Update

Making Every Drop Count: Farmer Demonstrations

Gillamii Advocacy

Project Focus: MLA Saltland PDS

Member Project Opportunities

DPIRD Seasonal Outlook

Events

UPCOMING EVENTS



- **Balijup Sanctuary Fauna Monitoring Camp**
- **Christmas and New year Closure**

Are you following us?



Twitter: @TheGillamii



Facebook: @Gillamii



Instagram: @TheGillamii



FROM THE COMMITTEE

CHRIS TOMLINSON

We are extremely excited to welcome Chris Tomlinson to the helm of the Gillamii ship as he takes the reins from our incredible Chair of 5 years, Sam Lehmann. We thank Sam for his commitment, enthusiasm, guidance, and support during his time as Chair, and we look forward to his affable self supporting as the Vice Chair on the committee next year. Chris has been a valuable member of the Gillamii committee for the last 5 years, we often joke that anything Tomo touches turns to gold, but the truth behind that is a hardworking, passionate, and dedicated producer who isn't afraid to trial methods to get the most out of his system and share the outcomes.

Originally farming in the Bremer Bay region for 21 years, there wasn't much question that Chris wanted to continue on in agriculture. When asked when did you know you wanted to be a farmer his reply was quick, "Since I was born". The Tomlinson's moved to Munglinup for 10 years, before moving to Cranbrook and enjoying not only the incredible views of the Stirling Range from their family farm 'Chinninup', but also appreciating the reliability of the region.

You've been involved on the Gillamii committee for five years, what made you join?

"To be honest Sam asked me! In all seriousness, it's important to be involved in the community". Although Chris isn't a self professed tree planter, he has seen Gillamii evolve over the years as the organisation listens to what the community needs, focusing not only on environmental initiatives, but productive and sustainable agriculture, and supporting rural communities which aligns with his passion for agriculture.

What are the benefits of having a group like Gillamii in the community?

Chris understands the importance of demonstrations, trials, and information sharing conducted in your own neighborhood "Having research and trials done in your area is a great benefit to the community", given the variability in soil types and constraints across the region. The Tomlinson family have most recently been involved in Gillamii's MLA Saltland producer demonstration sites, and so far the established pasture has been impressive "The extra moisture this season has been a big benefit... I check it before I check the sheep these days!".

Is there anything you hope to contribute to during your time as Chair or on the committee?

Before our AGM, Chris had a discussion with another long serving committee member. Both were more than happy to step up as Chair to continue the momentum of the group. "It's the best group for discussion, and having such passionate team members makes us as committee members passionate to support the group and keep it going forward for the next person to takeover".

NRM NEWS

NRM Officer Update



Gillamii Funding Success

Gillamii was successful in obtaining funding through the State Natural Resource Management Grant for the Mapping the Way Forward: Natural Resource Management in the Kent-Frankland project. Since Gillamii's inception in 1994 hundreds of Landcare projects have been undertaken, comprising of millions of dollars in investment, requiring long-term monitoring and management of data. Fluctuations in organisational capacity can lead to mismanagement of data, creating an inability to ascertain cumulative impact. Without this, resources cannot be strategically assessed or invested.

This project will develop a series of protocols enabling organisations to process and consolidate project data, digitisation of NRM in the Kent-Frankland region, and consulting our Menang community to acknowledge caring for country. Good data management allows organisations to establish baselines, benchmarks, and goals to keep moving forward."

Gillamii has also been successful in obtaining funding through the Junior Landcare grant program for Cranbrook Primary School's 'Bush Tucker Garden', weed control protecting Black Cockatoo habitat, and regional drought resilience planning Indigenous consultations.

Gillamii has also been awarded two fantastic revegetation and fencing opportunities (please see membership opportunities for further details) through Regional Development Australia Great Southern, DWER, and Greening Australia. These projects will be conducted in 2023 and 2024. It has been another great year for projects, and we will be busy writing applications next year in anticipation for the Federal Government's National Landcare Program (RLP), State NRM, and the Future Drought Fund.

Farm Planning Course

At the end of June, RCS and Gillamii were able to deliver our drought mitigation planning workshop with facilitator Nick Kentish. This two and a half day course covered everything from the psychology behind business decisions during hard times, to strategies for management in dryer seasons.

At the end of the course participants walked away with individualised management plans for each enterprise that were developed over the course and finalised during a one on one mentoring session. All participants were offered the opportunity to develop a demonstration site from their management plan, which is currently being actioned.

NRM NEWS



AGM 2022: Agricultural Technology and Resilience

As a team, organising our AGM is one of the most rewarding events we run. It gives our organisation and team an opportunity to look back on everything we have achieved throughout the year.

No longer a thing of the future, agricultural technology is continuously growing and improving with the aim of maximising efficiency, productivity, and farming resilience. Ag technology is continually adapting and transforming with the potential to increase not only productivity through efficiencies, but also sustainability.

Gillamii engaged DJI Australia, specialists in drone technology, to demonstrate the AGRAS T30 which is currently the largest agricultural spray drone on the market. The drone is currently being utilised in plantations and viticultural production, with application in broad acre farming continually being developed. The T30 can help reduce fertilizer use and increase yield with effective, data-driven best practices.

The event was attended by local primary producers, community members, and agricultural and natural resource management industry representatives, and began with a demonstration of the drone in action. A lot of interest was shown, with the farmers weighing up the practicality and costing which seemed impressive economically and environmentally compared to traditional spraying methods.

The demonstration was followed by AGM proceedings, an update from Gillamii project officers covering projects including work undertaken under the Future Drought Fund project, and information on the SW Drought Hub node. The event was concluded with dinner and drinks, enabling attendees to network and celebrate the work conducted by Gillamii over the year.

We are proud to say it has been another magnificent year. None of what we do could be achieved without our community, membership, committee, project partners, and funders. We are so grateful. Check out the 2022 wrap up video on the main page of our website gillamii.org.au



Making Every Drop Count

Farmers in districts between Tambellup and Ravensthorpe have experienced particularly difficult rainfall conditions with 2018 being the 3rd lowest rainfall figure on record. Winter rainfall is down 20% in some western areas and damaging, sporadic summer rain events have become more prevalent. Strong empirical and anecdotal evidence demonstrates that these kind of rainfall patterns may be ongoing. Additionally many farmers in recent years have had to rely on carted water for basic agricultural needs, costing approximately \$2.8 million in W.A's water deficient areas, this is set to rise given the long-term rainfall predictions

The farmer demonstration sites supported by the Future Drought Fund project are underway, aiming to get the most out of every drop. The long term outcomes of this project is to increase an agricultural system's capacity to adapt to significant changes in climate. The Tambellup Community Crop demonstration site aims to improve drought resilience in cropping systems by incorporating increased trace and ultratrace minerals & beneficial soil microbes (NueGen product) to improve soil and plant health. Thank you to GrowSafe (AMF) for donating the products for this trial.

The second demonstration site is being developed in collaboration with a local landholder who was interested in trialing the effectiveness of dam covers in mitigating evaporation in an agricultural system. The site will be monitoring the performance of the Daisy Dam cover in collaboration with the Water Smart Dam project technical leads from UWA and DPIRD.

TCCG Demonstration: The demonstration is a collaboration with the Gillamii Centre, Grow Safe (Australian Mineral Fertilisers) and the Tambellup Community Cropping Group (TCCG).

Treatment Overview

Treatment 1 (TCCG1) - 20 Hectares Seed Coating: 600g/t AMF Premium Agricultural Soil Microbes with 6L Micro-STIX2 Polymer Fertiliser: 100kg/ha CSBP Agflow Extra Fertiliser & 50KG/ha NueGen Product

Treatment 2 (TCCG 2) (Control) - 20 Hectares 100kg/ha CSBP Agflow Extra Fertiliser.

Dam Cover Trial: Data will be monitored in a control dam without the Daisy Dam Cover and the treatment dam which will have the Daisy Dam Cover. We will gather a month of data prior to treatment, to ensure we have a baseline of measurement for the dams. Data loggers will be utilised to collect this information. The parameters measured will include evaporation loss, depth data, temperature and water quality.

NRM NEWS

Know Your Patch

In collaboration with Joselyn Juraszek (DBCA environmental education coordinator), Gillamii delivered the Know Your Patch to each enthusiastic school in three sessions, with each School adopting a spot within their townsite. The program has fostered a mutually beneficial relationship between our local Schools and Gillamii, that will be the foundation for on going environmental education for our next generation of environmental stewards.

In session one students were guided through some brainstorming with Joselyn and Ash where students began to think critically about their local environment in the past, present and future. The students got to meet Jos over Zoom which was exciting in itself, and Ash facilitated the activities in person. During this session, students began to think about what they already know about the environment they live in, what they like about their patch, dislike about their patch, and what they thought their area looked like 500 years ago. In session two students mapped their Patch using SWAY and Google Earth. Students enjoyed exploring the mapping program, navigating measurement and perimeter tools, and gained an understanding of the bigger picture of their patch.

The first Patch visits took place in June 2022, across a half day excursion to their Patch. Cranbrook and Frankland River year 4,5 and 6 students walked to their local bush reserves surrounding the town, and Tambellup students walked to the Gordon River Reserve. These areas have been carefully selected for their environmental significance to the town. Guiding the Patch visits was local environmental consultant Wendy Bradshaw, Gillamii's Project Officer Ashley Marjoram, and local Menang Elder May Penny.

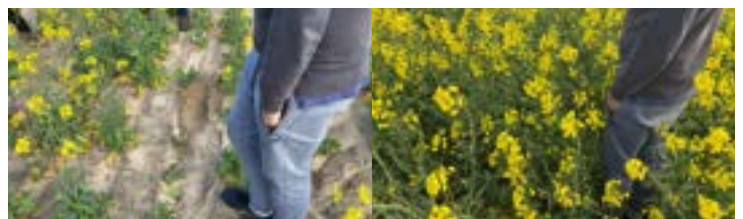
The aim of the session was to explore what was in their Patch and assess the over all condition, provoking thoughts about what the community could potentially do to enhance and protect the Patch, and determine what they might want to explore in the future. The visits were received with a lot of enthusiasm from the teaching staff and students, with the Know Your Patch model providing an attainable platform for on going environmental education that can align with and enhance the current curriculum. Over the excursion we navigated activities such as the scavenger hunt, invertebrate survey, and habitat assessment in the patch journals which have provided the perfect foundation and baseline for future activities. We look forward to continuing activities with the schools in 2023!



Controlled Traffic Farming and Soil Amelioration Tour

The sandplain soils of WA are typically affected by numerous constraints including water repellence, subsoil acidity, subsoil compaction and poor water and nutrient holding capacity. Soil amelioration techniques and controlled traffic farming (CTF) that overcome multiple soil constraints can result in large increases in productivity, resilience and sustainability. Controlled traffic farming (CTF) is a farming system built on permanent wheel tracks where the crop zone and traffic lanes are permanently separated. It can improve profitability and sustainability by increased yield, better grain quality and reduced costs. The environment can improve, with less nutrient leaching and less water erosion etc. Soil amelioration approaches typically involve either the strategic application of soil amendments, such as lime, dolomite, gypsum, organic matter or clay-rich subsoil, or the use of deep tillage or often, a combination of the two.

This CTF Regional Tour was all about seeing soil amelioration in practice and the day well and truly lived up to expectations. Traveling 4 hours north of Cranbrook to Bolgart, participants met Trevor Syme on his broadacre cropping farm and saw what can be achieved by 100% committing to best practice soil amelioration works such as deep ripping, claying and ploughing with CTF an essential component for trafficability. Trevor has invested heavily in both machinery and time to improve the structure and composition of his soil, which is paying off with canola going from <math><1\text{t/ha}</math> to $>4\text{t/ha}$ on his sandy soils. Participants attended the WANTFA CTF conference in the following days, listening to a wide range of topics including soil constraints, soil amelioration and weed control, and nutrition post amelioration. The event was facilitated by the Gillamii Centre in collaboration with the WA No Till Farmers Association (WANTFA).



NRM NEWS

Bloom Festival - Our Wetlands and Wildflowers

This Spring the community showcased our natural assets to over 140 people who came through the doors to our Wetlands and Wildflowers exhibition. On display were a beautiful array of native flora including Orchids and the Cranbrook Bell, floral artwork by Lesley Brims and Marion Denney, and photography and videography of our beautiful wetlands by Rev John Jones, Sandy Lehmann and Gan Eden Media.

Gillamii would like to thank the Shire of Cranbrook who supported the week long photographic and wildflower Great Southern Treasures Bloom Festival exhibition, "Wetlands & Wildflowers". Thankyou to those community members who kindly shared their wildflowers growing their properties



ADVOCACY

Advocacy is the public support for, or recommendation of a particular cause or policy. Gillamii sees this as a vital part of our role to ensure our community, agriculture, and unique environment are represented, seen, and heard in a world often controlled by a top down approach. Advocating for our community and members means we have a seat at the table when it comes to policies, funding, research, and educating the wider community about our challenges and successes as a region. Gillamii is an advocate for productive and sustainable agriculture, rural communities, and healthy natural ecosystems.

Gillamii has been at the table for many forums, events, and initiatives over the year including:

- **\$15 Million Climate Resilience Forum** - invited as delegates.
- **GGA Forum** - invited as an industry group.
- **CBH, DPIRD and Wide Open Agriculture: Carbon Neutral Grain Pilot Workshop** - Invite only forum.
- **Caring for Cranbrook's Lakes and Shore Birds** - Invited as the representative NRM Organisation.
- **DPIRD Carbon Farming Stocktake** - Invited as a delegate.
- **Caring for Kwongan Bushland** - Invited as the representative NRM Organisation.
- **Regional Agricultural Landcare Facilitator Conference (Canberra)** - Invited as a speaker to present on the Productive Saline Pastures project.
- **National Landcare Conference (Sydney)** - Invited as a speaker to present on the Community, Carbon and Conservation project.
- **Women in Farming Annual Seminar** - Invited to present on the Community, Carbon and Conservation project.
- **State Natural Resource Management Conference** - Invited to present on the Saltland Genie App, Community, Carbon and Conservation Project, and Flora, Fauna and Farming: Connecting Kids to Country.
- **Albany Sandplains Wetland Conference** - Invited to present on a panel about catchment group management.





PROJECT FOCUS

PRODUCTIVE SALTLAND PASTURES PRODUCER DEMONSTRATION SITES

The Gillamii Centre is one of the key grower groups in WA, founded in 1994 by primary producers who identified a need for disseminating latest research and technology on agricultural production, biosecurity and conservation to land managers in the area. This project will establish 6 paddock-scale PDS sites in year 1 to demonstrate variation in productivity of key shrub and understory varieties and a paddock scale increase in late summer/autumn biomass production (up to 300%) and soil organic carbon and total carbon. The project will also achieve the following.

- Conduct a cost-benefit analysis to determine relative economic performance of the salt-tolerant feed-base systems (using the Saltland Genie SGSL Economics Calculator), focusing on BCR and payback period
- 50% of core producers will have established a salt-tolerant forage system on their moderately salt-affected land for sheep grazing systems
- 50% of observer producers will have established (or intend to establish) a salt-tolerant forage system on their moderately salt-affected land for sheep grazing systems
- 90% of Core producers and 70% of observer producers will have increased their knowledge and skills in the establishment, management, and benefits (production and sustainability) of salt-tolerant forage systems on moderately salt-affected land for sheep grazing systems
- Results of the PDS are widely disseminated through targeted extension/adoption activities

Snapshot

Project Period

2022-2028

Project Value

\$145,619.00

Project Officer

Freya Spencer

Collaborators

Meat and Livestock
Australia



MEMBER PROJECT OPPORTUNITIES

CARBON ACCOUNTING

Expression of Interest Carbon Audit

Gillamii is collaborating with Richard Brake Consulting to support farmers in understanding their agricultural enterprises' carbon position.

*"It so important to have Gillamii involved in this decarbonisation process for the West Australian economy and agricultural supply chains. I know you appreciate that your community is highly productive from an agricultural point of view, located in one of the most precious biodiversity regions in the world which is under ecological pressure, and the land around the Stirlings and Porongorups in the southwest region is much sought after for its rainfall and sequestering capacity - sought after by many sectors including the oil & gas sectors and middlemen carbon farming service providers, not just agriculture. **That's why it's crucial that agriculture knows its own emissions footprint and can decarbonise itself first (through mitigation strategies and offsets as a bridging solution), before it partners outside of its supply chains in any offsetting.**" - Larissa Taylor. Director, Savoir Consulting*

We are conducting a full carbon account and report for each enterprise using the University of Melbourne's PICCC-GAF tool. Limited spots available.

Contact Ash at po1@gillamii.org.au or on 0427 261 234.



MEMBER PROJECT OPPORTUNITIES

SMALL SCALE REVEGETATION

SEEDLINGS AVAILABLE

Small Projects

REGIONAL DEVELOPMENT AUSTRALIA GREAT SOUTHERN WA HAS PARTNERED WITH GILLAMII TO PROVIDE LANDHOLDERS WITH NATIVE SEEDLINGS FOR 2023 SMALL-SCALE REVEGETATION PROJECTS



Get in touch NOW

Get in touch with Gillamii to discuss your site, we will then come out to develop a site plan and order seedlings



150 - 600 Seedlings per property available



2023 Planting

Preparation to be conducted by landholder and seedlings planted by Gillamii



CONTACT GILLAMII

0427 500 374
admin@gillamii.org.au



Regional
Development
Australia
GREAT SOUTHERN WA



MEMBER PROJECT OPPORTUNITIES

FENCING AND REVEGETATION *WORKS CONDUCTED 2024*



2024 Restoration Opportunity

Revegetation & Protective Fencing

Greening Australia are partnering with Gillamii to provide landholders the opportunity of revegetation and protective fencing to enhance environmental assets such as Black Cockatoo habitat and Threatened Ecological Communities. Projects will be implemented as environmental offsets through the Department of Water and Environmental Regulation's Environmental Revegetation and Rehabilitation Fund, part of the State Government's Green Jobs Plan.

Opportunity

- ✓ Site Assessment
- ✓ Restoration Plan
- ✓ Funding for Seedlings & Protective Fencing
- ✓ Assistance with Site Prep & Establishment

Site Information

- ➔ Sites will be assessed and accepted by DWER based on environmental values presented
- ➔ Revegetation undertaken is to be protected in perpetuity through some mechanism (i.e. covenant)
- ➔ Planning 2023 for 2024 Revegetation

Contact Us

0427 500 374
admin@gillamii.org.au

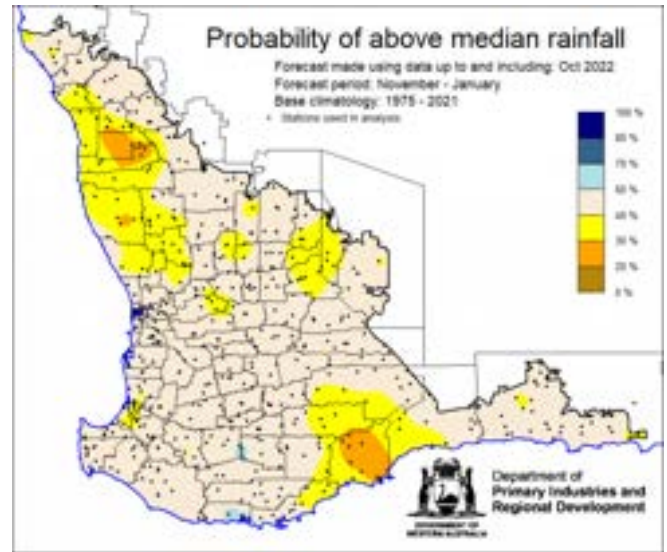


Department of
Water and Environmental Regulation

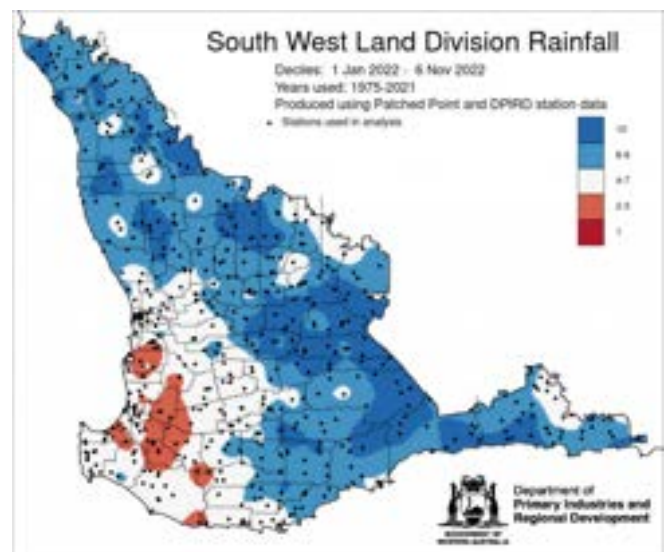
Seasonal Climate Outlook

DPIRD Season Outlook

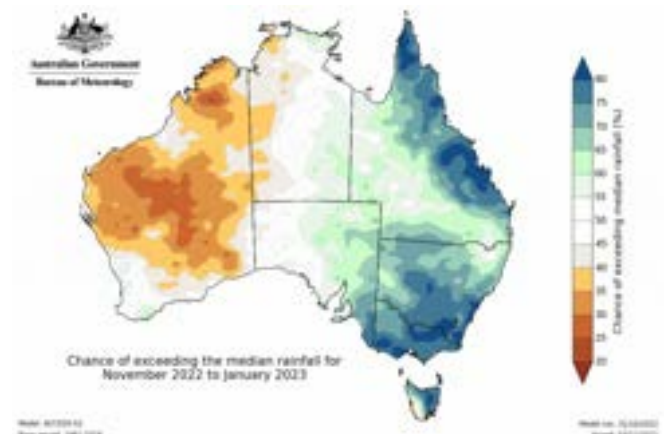
- For November 2022 to January 2023, the SSF forecast is indicating mostly neutral (40-60%) probability of above median rainfall for the majority of the South West Land Division. Less than 40% probability for part of the Central West, Central Wheatbelt, Great Southern and South Coastal Forecast districts. The most likely decile range map is indicating decile 2-3 for the majority of the SWLD. Skill is mostly poor at 50 to 70 % consistent.
- The Bureau of Meteorology's seasonal outlook for November 2022 to January 2023 is indicating 35-65% chance of exceeding median rainfall for the SWLD, with moderate to good skill (55-75%). The current longer-term outlook (at time of writing) for December 2022 to February 2023 is 30-50% chance of exceeding median rainfall with mostly moderate skill (45-65%).
- Temperature outlooks for November 2022 to January 2023, from the Bureau indicate a 20-65% chance of above average day-time maxima, with the lower chances for Great Southern, South Coastal and South East Coastal forecast districts. Skill is good at 75-100%. For night-time minima for the SWLD, the Bureau is indicating 30-65% chance of exceeding above average temperatures, with the higher chances for Central West, Lower West, South West and South Coastal forecast districts. Skill is good at 75-100%.
- October rainfall was above average with reports of hail. October maximum temperatures were below average to very much below average. Minimum temperatures were below average.
- In the next couple of months, the warmer sea surface temperatures north of Australia increases the likelihood of tropical cyclones developing. In La Niña years, the first Australian tropical cyclone to make land fall is about 3 weeks earlier than in a neutral ENSO year. Later spring and summer rainfall in the SWLD are usually caused by isolated thunderstorms and tropical cyclones and are therefore harder to (long-lead) forecast, than winter rainfall which are mostly from westerly frontal systems.



SSF forecast of the probability of exceeding median rainfall for November 2022 to January 2023 using data up to and including October.



Rainfall to date map for South West Land Division 1 January – 6 November 2022



Rainfall outlook for November 2022 to January 2023 for Australia from the Bureau of Meteorology

UPCOMING EVENTS



Bandicoots, Birds and Eco-restoration:

A Citizen Science Ecological Monitoring Project at Balijup near Cranbrook



1pm Thurs 12 Jan to 12 am Monday 16th January 2023

Venue; Balijup Sanctuary - near 704 Nunijup Road, Tenterden, near Cranbrook. Camping at Lake Nunijup Hall, Stockyard Road, Tenterden.

You are invited to participate in this four day event of Bandicoot and fauna surveying and other environmental monitoring on Balijup, a special property forming part of the Gondwana Link conservation program. Registration essential-

No cost- but need to supply own food/camping equipment. Come for all or part of the event. Participants will camp at nearby Lake Nunijup camp ground (Stockyard Rd, 19.7km from Albany Highway, Kendenup).

Participants will work with wildlife ecologists and Basil Schur of Green Skills Denmark and others on a range of citizen science monitoring activities at and near Balijup farm including bandicoot re-trapping, phascogale monitoring, bird & bushland surveying.

Green Skills has established a 111ha fenced fauna conservation sanctuary in Wandoo & Jarrah forest at Balijup (see <https://chuffed.org/project/balijup>)

**For further information and registration: contact Basil Schur at Green Skills Denmark
0429481019 Email bschur@greenskills.org.au**

The event is part of Green Skills' conservation activities supported through the Koorabup Trust and the State Natural Resource Management program., It also forms part of the South Coast Festival of Birds and Biodiversity. The Balijup project has also been supported by the Hordacre/Vanderbyl family, the Gillamii Centre, The Koorabup Trust, Lotterywest, Conservation Council of WA, Birdlife WA, Parks and Wildlife Service of the Dept of BCA, and UWA Albany and many individuals and volunteers



natural resource
management program



The Koorabup Trust



UPCOMING EVENTS



CHRISTMAS

Closure Dates

Closed:	24th Dec - 10th Jan
Reopening:	11th January, 2023

Wishing you a wonderful Christmas and a
Happy New Year, from the Gillamii team.



EQUIPMENT FOR HIRE

Bookings through our website:

<https://www.gillamii.org.au/water-testing-equipment-hire->

Members have free access to hire equipment available at The Gillamii Centre Including:

- Comm Veg Direct Seeder
- Chatfield Tree Planter
- Fox and Cat Traps
- Pottiputki Tree Planters
- Ripper Moulder
- Salinity and pH Water Testing Kit



Chatfield Ezy-planter for hire \$110.00/day for members

ARE YOU A MEMBER FOR 2023?

Check out the details of the Gillamii membership on our website: <https://www.gillamii.org.au/membership>.

Payment

The Gillamii Centre Inc

BSB 633 000

Account 110 006 285

Reference - (Your Trading Name) Membership



Interactive whiteboard in the Bendigo Bank meeting room, which is available for hire

OPEN
LIBRARY

Cranbrook Public Library

Wednesday - Friday

9am - 4.30 pm



Cranbrook Shire Newsletter

Keep up to date with the Shire news!

To subscribe, email

cranbrooknewsletter@gillamii.org.au



Bendigo Bank Meeting Room Hire

Available for community hire!

Seats 30 people

Call 9826 1234 for more information



Gillamii Socials



Twitter: @TheGillamii

Facebook: @Gillamii

Instagram: Gillamii Centre

The Gillamii Centre

Gillamii Autumn 2021 Newsletter
140 Climie Street, Cranbrook, 6321

Postage Paid
AUSTRALIA