

Issue 10 | 31-08-2023

GILLAMII NEWSLETTER

Winter-Spring Edition

Cranbrook and
Gillams Bell
Blooming in the
Gillamii Garden!



**Sub-Surface
Catchments-
Good Enough to
Drink?**

**Regional Land
Partnerships:
Wrap Up Report**

**Project Focus:
GRDC Grain
Legume Project**



INSIDE THIS ISSUE

From the Committee

Phil Horrocks

NRM News

Regional Land Partnerships: Wrap Up
Connections and Collaboration and GGA Forum 2023
Meat and Livestock Australia Producer Demonstration Site
Revegetation Season
Subsurface Drainage Catchment Monitoring

Project Focus: Closing the Economic Yield Gap of Grain Legume in WA

Member Project Opportunities

DPIRD Seasonal Outlook

Events

UPCOMING EVENTS



- **Gillamii Spring Field Day | 21st of September**
- **Bloom Festival Exhibition | 23rd September- 29th September**

Are you following us?

-  Twitter: @TheGillamii
-  Facebook: @Gillamii
-  Instagram: @TheGillamii

FROM THE COMMITTEE

PHILL HORROCKS



In this edition we hear from our Cranbrook Shire representative Phil Horrocks, who after 8 years on our committee has stepped down as Shire President. Phil made his way from New Zealand to the shores of Australia close to 45 years ago, and by the sounds of it Phil is just as happy to have made his way to Cranbrook as we are. "Cranbrook has given the Horrocks family a lot. We started with just two of us, and there is a lot here now". We would like to wholeheartedly thank Phil for his advocacy of the group, unique perspective, and never failing to making us laugh at a committee meeting with his dry, kiwi sense of humour. Our next shire representative has some big Phil size shoes to fill (that is if he doesn't mistakenly take Luke's shoes after a meeting again).

How did you find yourself on the Gillamii Committee?

It's a part of the council role, with quite a few committees in the community to go on, and I put my hand up for Gillamii, and Cranbrook Motorcross. I knew there were good people involved with Gillamii, and it was a 'get up and go' organisation which was something I wanted to be a part of.

Having been the Shire President for a long period of time, do you think there is value for grower-landcare groups like Gillamii for the local community?

Highly valued, you're respected in the community and by the Shire. It always has been a good relationship, we are at arms-length which is what we want to be and support where we can, and any concerns raised it has been my role to address them.

Have you seen any changes in your 8 years, in areas of focus for the Shire and Gillamii?

8 years is a long time ago for an old man! Early on Gillamii's focus was more landcare, and we have moved but we moved before I came on board to focusing more on agricultural sustainability.

Landcare and agricultural have a long standing relationship, it can be challenging as an organisation to meet all the needs and interests across both areas... (cont)

Do you think we have a balance between agricultural and landcare focused projects?

It is a good balance, the committee and community would acknowledge that, I would have thought. You only have to look at the AGMs to see the support, which tells you something.

Are there any initiatives or projects that have been a stand out in your opinion?

I think carbon has been interesting, you're in front of the curve, almost too far with carbon. That's just me, but I think there will be a lot of knock backs with carbon until it all gets bedded down. I'm sitting here looking at trees we have planted. They are doing a good of a job as any of the carbon planted ones, but i'm not getting any money for it. My motivations are landcare, where you can see the degradation of land that is no longer any good (for farming) but is planted to trees. It has aesthetic value.

What's next for you Phil?

Just keep on farming, that's what I enjoy most. I enjoyed my time on council and at Gillamii, and I'm going to keep on enjoying farming. I would be happy to stay on as a committee member for Gillamii, but to me you want vibrant people and new perspectives. I have enjoyed my time on the committee and worked with some really good people and enjoyed the ride. It's certainly not goodbye, i'm still a member of the Gillamii organisation, and will be for a long time.



Regional Land Partnerships - Project Wrap Up

Regional Land Partnerships invested \$450 million over 5 years from July 2018 to June 2023, delivering national priorities at a regional and local level. As the largest component of the National Landcare Program, this investment is being delivered through a reformed regional model that supports a range of projects contributing to four environmental and two sustainable agriculture outcomes.

Projects are connecting efforts for the recovery of species identified under the Threatened Species Strategy, protecting threatened ecological communities, and reducing threats to our globally-important wetlands and world heritage sites. Projects are also improving on-farm soil, biodiversity and vegetation, and increasing the capacity of our farms to adapt to climate change and evolving market demands.

South Coast Natural Resource Management received \$11.8 million in investment over five years – from July 2018 to June 2023. Together with 15 key partners including catchment groups such as Gillamii, delivered on national priorities at a regional and local level. Climate action was identified as a priority for the agricultural industry, investing in supporting the region to adapt, innovate and address market demands for sustainable food production.

Australia's climate has warmed on average by 1.44 ± 0.24 °C since national records began in 1910, leading to an increase in the frequency of extreme heat events. There has also been a decline of around 16 per cent in April to October rainfall in the southwest of Australia since 1970 (State of the Climate Report, 2020). During the delivery of this project, our region experienced the warmest year and second driest on record in 2019, followed by the second warmest year on record in 2020. In 2021 and 2022 WA received above average rainfall due to La Nina, providing a stark juxtaposition and different challenges compared to the seasons of 2019 and 2020.

The project enabled Gillamii to deliver a mixture of on-ground action and provision of resources including the Super Sweet Sudan trial, events, workshops, and field walks, and facilitated landholders to complete an on-farm carbon audit. Driven by a global interest to adapt to and mitigate the effects of climate change, the delivery of this project coincided with a significant boom of interest in agriculture's role and opportunities in this space. This resulted in an overwhelming amount of initiatives, resources, consultancies, and demands on farmers. Delivering the climate action project during this period presented it's challenges, however the resources provided during this time supported the community to adapt, innovate, and address market.

Regional Landcare Partnerships: Climate Action Project (RLPGILP6)



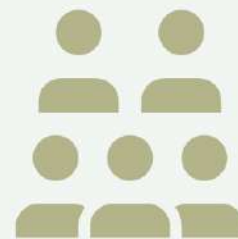
Project Period: June 2019 - June 2023

Access the full report: www.gillamii.org.au/all-projects-blog/rlpgil-climate-and-sss-trial

Funding
\$63,990.00



367 People



Directly engaged with the project

Industry Engagement



Key Topics

- Farming Resilience
- Summer – Autumn Feed Gap
- Fire Preparation
- Carbon Audits
- Perennial Pastures
- Carbon Farming Projects
- Farm Management Strategies for Climate Change
- Soil Health
- Beneficial Invertebrates
- Climate Change and Seasonal Variation
- Grazing Cereals
- Biodiversity and Farming
- Natural Capital Accounting



Regional Landcare Partnerships: Climate Action Project (RLPGILP6)



Project Period: June 2019 - June 2023



Soil Health and the Summer Feed Gap: SSS Trial

- 135 ha of Super Sweet Sudan established over 3 years.
- **Trial Set Up:** Three 12m x 100m strips of SSS, leaving voluntary pasture in between as control plots.
- **Monitoring:** Bulk density and soil moisture in 10cm increments to 50cm.
- **Partnerships and Collaboration:** 3 local landholders, DPIRD and Pioneer Seeds.



8

Carbon Audits conducted for farming enterprises



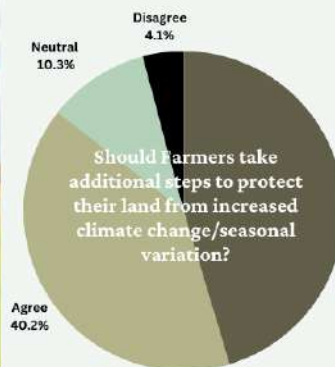
80

Survey responses collected (Climate Change Issues for the South Coast Agricultural Industry)



Key Climate Action Findings

- Over the survey period, there has been a **shift in certainty** in climate change theory, and a slight shift in the degree of concern about the impact on agriculture.
- **86%** of respondents have seen a **change in rainfall patterns** on their property.
- The on-farm mitigation practice with the highest rates of 'Improved' knowledge over the last three years were **soil amelioration, maintaining ground cover across all seasons, and feedlot/confinement feeding.**
- The **most adopted** on-farm mitigation practices by respondents included **incorporation of trees** and protection of remnant vegetation, **maintaining groundcover** across all seasons, and improving **livestock performance.**



Connections and Collaboration with NSPNR and GAC

Connection to country, connection to community, and collaborating on shared priorities. Recently our neighboring group, North Stirlings Pallinup Natural Resources invited Gillamii staff to join them for a day with the Gnowangerup Aboriginal Corporation for cultural training and discussions on shared priorities.

We had a really positive and productive brainstorm on future project ideas and general principles to work by. Some of the priorities included increased school engagement, two-way science projects, climate change adaptations, land restoration, and increasing communication and spreading awareness between organisations and the community.

It was wonderful to be a part of this day with our neighboring group North Stirlings Pallinup Natural Resources and Gnowangerup Aboriginal Corporation.



GGA Forum 2023

The Biannual forum was hosted on the 28th of July this year, with project officers Freya and Ash attending the industry event. Held every two years, GGA Forum builds vital cross-industry links and forges opportunities GGA network groups to engage with industry to shape the future of agriculture.

Delegates can expect valuable networking time, topical discussions and information exchange on matters we need to consider together as a WA agricultural community.

This years forum offered thought provoking presenters including Zoe Arden, Associate Director at the Cambridge Institute for Sustainability Leadership, discussing creating a mindset for optimal change and impact. The forum also covered hot topics including natural capital accounting, and the cultural heritage act that has since been suspended.

As always these forums leave plenty of food for thought for the project officers, and provides an opportunity to align with and connect to our partners in the agricultural industry.

NRM NEWS

Productive Saltland Pasture for Southern WA

This Producer Demonstration Site Project aims to improve land managers knowledge and skills in the establishment, management, and benefits (profitability, productivity, and sustainability) of salt-tolerant forage systems on moderately salt-affected land. The objective of this program is to establish 150 hectares of salt-tolerant forage pastures on 6 local sites to demonstrate variation in productivity of key shrub and understory varieties and a paddock scale increase late summer/autumn (February – April) biomass production and soil organic carbon and total carbon.

This project is funded through Meat and Livestock Australia (MLA) Producer Demonstration Sites (PDS) Program, a continuation of Gillamii's commitment to the remediation of salt-affected land into productive pasture systems for livestock grazing. in-kind support has been provided by DPIRD, CSIRO, host and core producers, thank you to all who have been involved.

PROJECT UPDATE

In Spring last year 4 sites, totalling 66 hectares, were established with perennial salt-tolerant pastures in collaboration with 3 host farming families. There are two additional sites to be established in August this year, bringing the total area to 150 hectares.

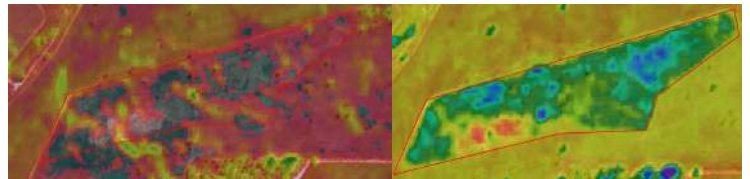
The sites are located throughout the Broomehill-Tambellup and Cranbrook shires, ranging from valley floors to areas further up the landscape in the transition zone of productive to salt affected soils. The motivation of producers to develop these areas into salt-tolerant pastures systems is to use both surface and ground water to manage the site's local salinity, while keeping the areas as productive paddocks, part of their various livestock enterprises.

On the 23rd of June 2022 a group of local producers and Department of Primary Industries and Regional Development (DPIRD) staff, hosted by Gillamii, spent the day visiting the sites to workshop ideas for pasture establishment.

The aim of the workshop was to utilise the knowledge of Gillamii's producers, experienced in productive saltland pastures, and connect them with the new PDS producers, aided by expertise from DPIRD. The group discussed the best pasture mixes, site design and establishment plan, tailored to local conditions and based on producer experiences. Salinity (EC), pH, elevation as well as indicator species had been analysed prior to the workshop to provided information to support decision making on the day.

The outcome of these workshops were 4 different site designs and species mixes, two comprising of pastures with pre-established saltbush, one to be direct seeded with saltbush alleys and a pasture understory and the remaining to be planted with saltbush seedlings in alleys with a volunteer pasture understory.

Since establishment last spring, all sites have had successful establishment and survived the first and very dry 2022-23 summer-autumn period. The two complete pasture sites had such successful establishment that they were grazed twice within the first 6 months of establishment. The remaining two sites with juvenile saltbush require stock to be excluded for the first year to allow proper establishment of the fodder shrubs.



NDVI imagery of one of the pasture sites for March 2022 and March 2023 (surrounded by crop stubble) indicating the increase in green biomass during the summer-autumn period

As part of this project both pasture and livestock parameters are being monitored (2022-2027) to demonstrate the key benefits of these systems. Parameters include: soil organic carbon, biomass (summer-autumn period), pasture nutrition (summer-autumn period), grazing days, live-weight gain and cost-benefit analysis. Please see following page for how the sites are progressing. Measurements are been taken during the summer-autumn period each year.

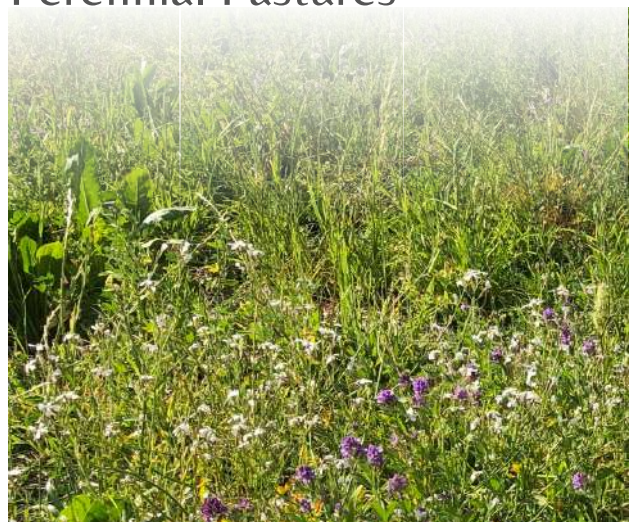


December 2022 (Three months after establishment)

April 2023 (Seven months after establishment and two grazes)

Check this trial out at the Cranbrook Croppy Spring Field Day

Perennial Pastures



In the first year of establishment the crop stubble has outperformed the pasture in total kg/ha of biomass, however nutritional value is looking increasingly positive, with chicory and lucerne having a noticeably higher % of Dry Matter Digestibility (71.8%) and Crude Protein (19.4%)

SUMMARY (2 SITES)

Baseline Pasture/Crop in Summer-Autumn: Barley crop stubble with surrounding old man saltbush

New Established Species: Megamax Panic, Howlong Cocksfoot, Lucerne SARDI 7 Series 2, Commander Chicory, Tall Fescue, Tall Wheat Grass and Puccinellia

Cost/Hectare: \$528.00

Average Annual Grazing Days: To be analysed

Year 1 Summer-Autumn Biomass/FOO: Overall biomass per hectare decreased (grazed once in the 6 months since it has been established). Therefore in the first year establishment when specifically focusing on total biomass, stubble outperformed the saltland pasture, with a 4.6 - 107% decrease in total biomass per hectare within the first year of establishment

Nutrition: -4.2% to +5.2% change in ME (Mj/Kg), 18% - 93% increase in Crude Protein

Average Liveweight Gain: To be analysed

Cost-Benefit Analysis: To be analysed



Direct Seeded Saltbush & Understory



Lowest cost system with biggest increase (114%) in digestible summer-autumn biomass when compared to the original volunteer pasture



SUMMARY (1 SITE)

Baseline Pasture/Crop in Summer-Autumn: Volunteer pasture consisting of Toad Rush, Barley and Rye Grass

New Established Species: Balansa Clover, Tamargee Kikuyu, Puccinellia, Rhodes Grass and Tall Wheat Grass with direct seeded dual saltbush alleys (Old Man, River and Wavy Saltbush)

Cost/Hectare: \$466.50

Average Annual Grazing Days: Grazing has been differed to allow for adequate saltbush establishment

Biomass & Nutrition: This site increased its total biomass per hectare by 80% in the first year since establishment

Nutrition: 22% Increase in ME (Mj/Kg), 6% decrease in Crude Protein

Average Liveweight Gain: To be analysed

Cost-Benefit Analysis: To be analysed

Saltbush Seedlings & Volunteer Pasture



SUMMARY (1 SITE)

Baseline Pasture/Crop in Summer-Autumn: Volunteer pasture consisting of Barley Grass, Puccinellia, Broome Grass and Rye Grass

New Established Species: Old Man Saltbush, Melaluca and Eucalyptus seedlings

Cost/Hectare: \$1326.00

Average Annual Grazing Days: Grazing has been differed to allow for adequate seedling establishment

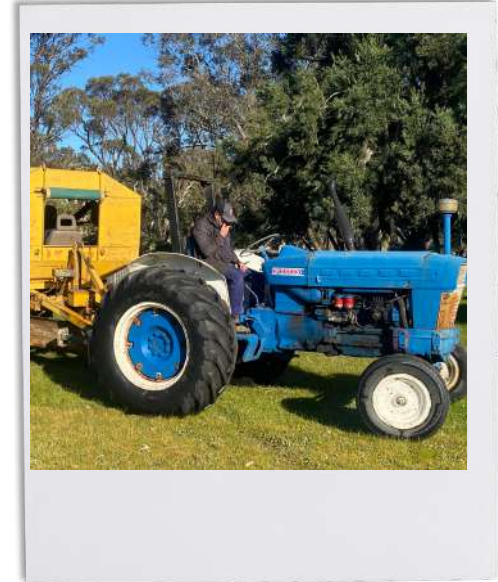
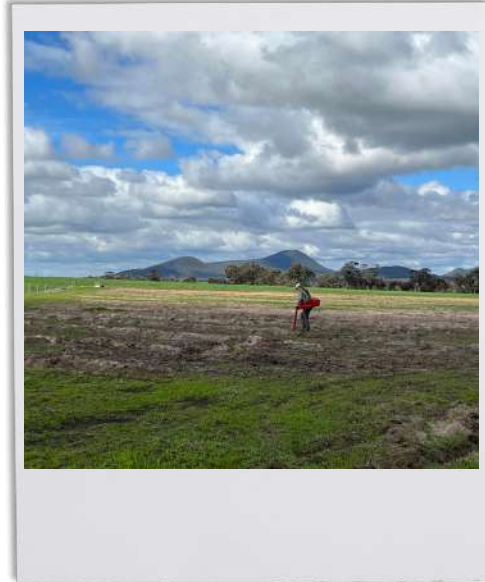
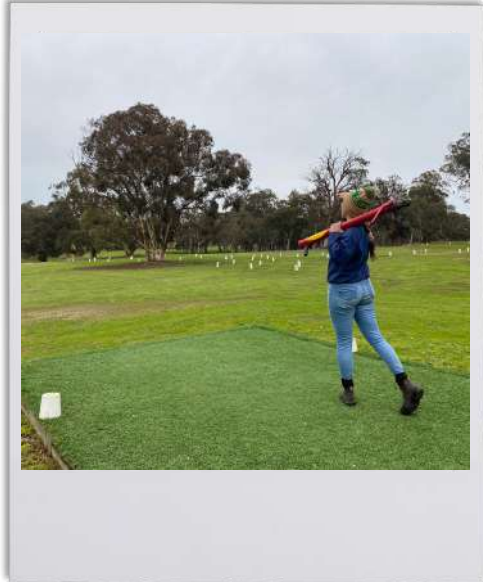
Year 1 Summer-Autumn Biomass/FOO: This site increased its total biomass per hectare increasing by 50.4% in the first year since establishment

Nutrition: 8.7% Increase in ME (Mj/Kg), 4% decrease in Crude Protein

Average Liveweight Gain: To be analysed

Cost-Benefit Analysis: To be analysed

Revegetation Season

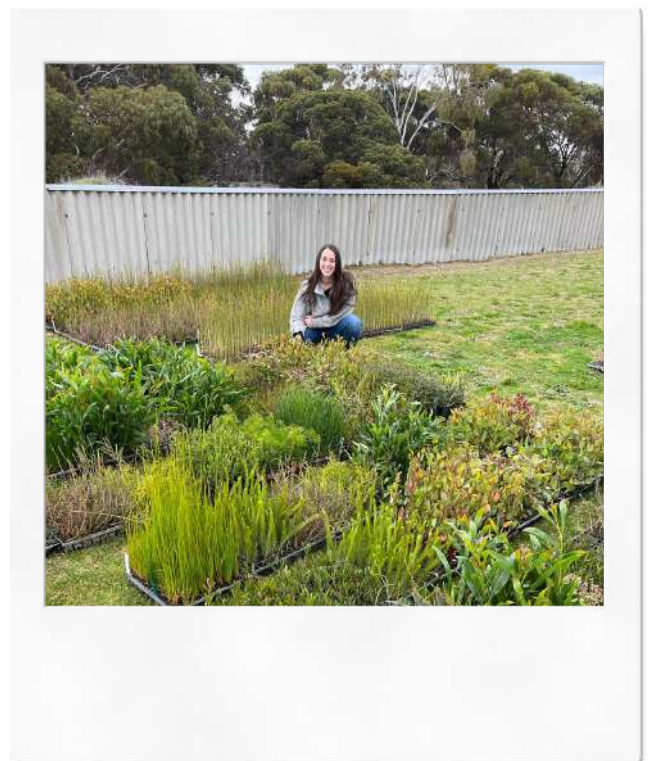


What better way to celebrate National Landcare Week in August than to be revegetating across Cranbrook and Broomehill-Tambellup Shires. Thank you to Regional Development Australia Great Southern WA, for funding 8000 seedlings for revegetation this year and the State Natural Resource Management Program WA funding revegetation for our Connecting and Protecting the Kent-Frankland Sub Region project. Take a look at some of the action this season,

- 16000 Seedlings planted this season
- 12 Landholders involved in tree planting or revegetation projects this year
- Plantings included biodiverse revegetation, saltland remediation, shelter belt enhancement, and aesthetic plantings.

How can you get involved next season?

Let us know about your plans by calling the office and we will seek funding in 2024 to assist.





Sub-surface Drainage Catchments: Good enough to drink?

In the local catchment, farmers have been implementing sub-surface perforated piping to drain away excess water in waterlogging (or saline) prone areas of their properties. In recent years a few progressive farmers have utilised this system, traditionally used for drainage, to intercept subsurface water before it reaches the shallow, saline groundwater table, redirecting it into their dams, increasing on-farm water security and helping reduce the impacts of prolonged waterlogging and salinity. The sub-surface drainage costs roughly \$10,000/km and currently, there is no monitoring in place to determine the flow rate, total flow, water quality and response to rainfall of this drainage, therefore the value of the fresh water being captured is unknown. Many farmers are still using these systems solely for drainage, potentially forgoing a highly valuable and limited resource.

Supported by the Future Drought Fund, Gillamii in collaboration with 4 local farmers will utilise pre-established sub-surface drainage systems to establish a monitoring network to measure the flow rate, total flow, response to rainfall and water quality at the 4 sites. The outcome of this monitoring will be to inform the local grower network of the potential opportunity to capture fresh sub-surface water, building increased drought resilience.

Drainage Downunder was contracted by the project landholders to install the drainage outside of the scope of this demonstration, completely privately funded. Drainage Downunder's constructions consist of a trenching machine that digs, lays pipe and backfills all in the one action. The specialised laser-regulated trenching machines are purpose-built in the United Kingdom and provide total grade control of subsoil drainage construction. The drainage incorporates a controlled depth of permeable hard-cap limestone aggregate over laser-graded slotted drain coil placed up to 2.4 metres in depth. This drains cause minimal paddock disturbance and can be cropped over etc., virtually invisible on the surface.

Monitoring so far has shown a with a total rainfall in mm between 18 July 2023 - 7 September 2023 of 76.8mm produced a total volume of water equating to 5,519,320 L. That's over two Olympic sized pools of water! **Come check the site out at our Spring Field Day on the 21st of September!**

PROJECT MONITORING

Monitor

The Farmbot Monitor is the remote monitoring device that integrates with Farmbot's range of wired and wireless sensors to allow real time remote monitoring and access to data. This will be installed on a star picket near the edge of the dam with wires covered with a protector to stop livestock damage.

Flow Sensor

Reports litres-per-minute flow rates. To be attached at the outlet of the pip, with an additional 30cm of pipe to be added at the end before it discharges into the dam.

Rain Gauge

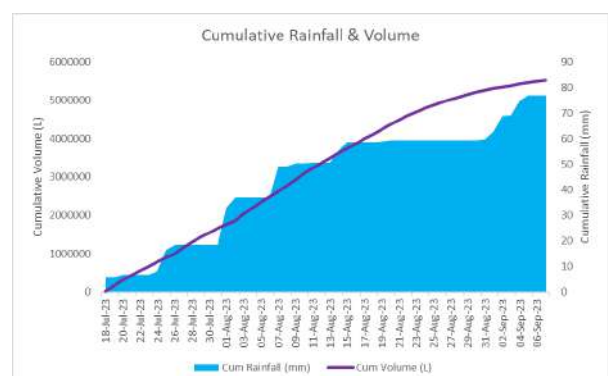
The Rain Gauge sits within 2 metres of the Farmbot Monitor, is self-installable and immediately operational. It is a self-emptying tipping bucket rain gauge. Compare daily, weekly, monthly and yearly rainfall. See the last 24 hours, MTD, YTD and Rolling 90 days.

Software & System

Login online or on your phone to see real time data. This will be publicly available for to the community to view on the Farmbot software via the Gillamii website.

Monthly Water Sampling

Water samples to be taken from the pipe outlets each month and posted to CSBP for their standard analysis to determine water quality (spray water and stock water).





PROJECT FOCUS

CLOSING THE ECONOMIC YIELD GAP OF GRAIN LEGUMES IN WA


This project has been established through investment by GRDC, engaging government, agribusiness, researchers and end-users to work collaboratively to address the poor rate of adoption of grain legumes in WA farming systems. The aims of the project are:

- Demonstrate recent advances in the production of grain legumes, across a range of environments and soil types, through 25 user defined farm-scale trials and, where appropriate small plot trials.
- Apply statistically rigorous trial results to refine best fit grain legume recommendations.
- Produce statistically rigorous economic analysis of grain legumes as a cash crop in the year they are grown and calculate the financial contribution of grain legumes to the longer-term cropping sequence.
- Develop and deploy key messages from credible entities to market the improved performance of grain legumes.

Year 1 trial: Can Vetch outperform Lupins as a rotation in a farming system

- Understand the economic impact of Vetch and Lupins on farm profitability by utilising a multiple farmer case study trial.
- Monitor performance, benefits, and limitations of the Morava Vetch and Jurien Lupins from a whole system overview including management of disease and weeds, nitrogen fixation, and harvest yield.
- Conduct a trial driven by local growers that is a platform for farmers, industry, and researchers to share information with a focus on grain legume market opportunities.

**Check this trial out at the Cranbrook Croppy
Spring Field Day**

 Note: All underlined words contain live links

Snapshot

Project Period

2023-2024

Project Value

\$42000.00

Project Officer

Ash

Funding

GRDC

Future Project updates can be found on our website

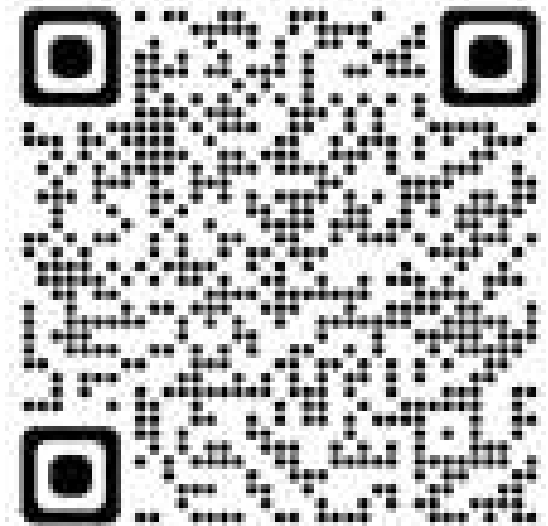


MEMBER PROJECT OPPORTUNITIES

GRDC GRAIN LEGUMES SURVEY

Grain legumes currently contribute in a small and diminishing way to the profitability of Western Australian farming systems. Analysis indicates that farmers are aware of the benefits of growing a legume in their rotation but have concerns about pulse reliability and profitability and need more confidence in their consistent production. Please let the Grower Group Alliance know about your opinions on grain legumes.

We know everyone loves a good survey (not!), but local information and input is highly valuable so if you have the time to spare, click the link or use the QR code and answer away!



www.surveymonkey.com/r/7WF8BY6

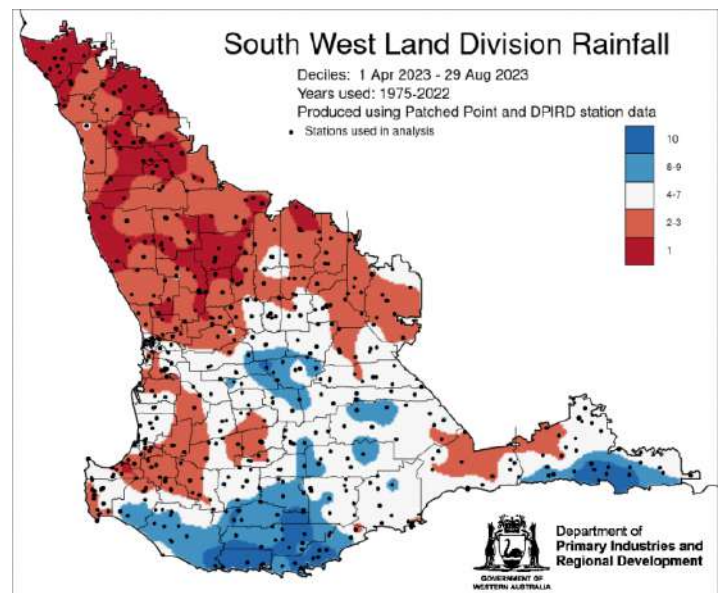
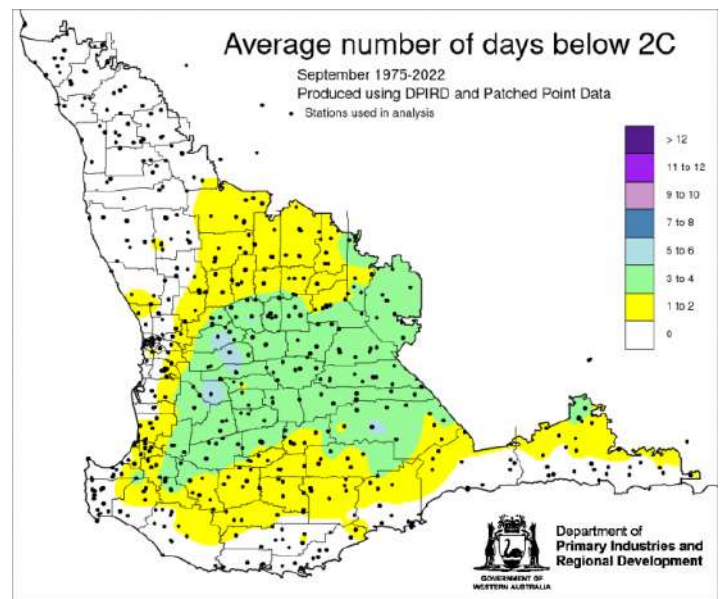
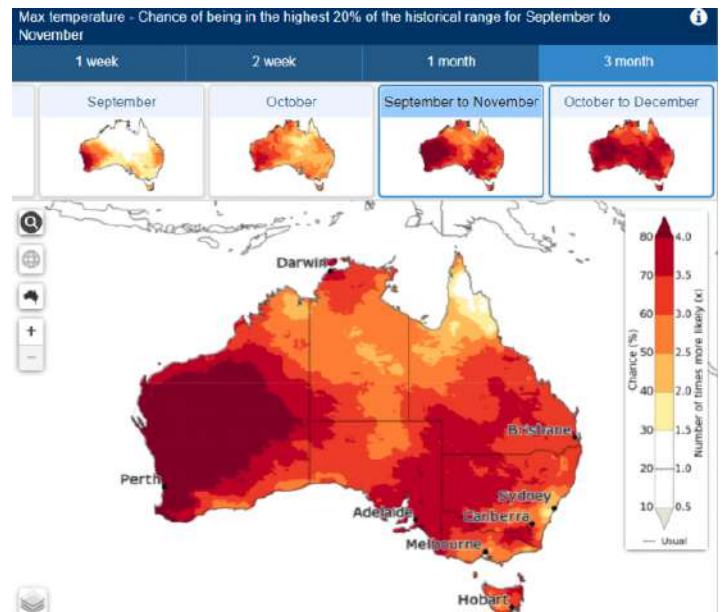


Seasonal Climate Outlook

DPIRD Season Outlook

Rainfall outlook for the South West Land Division (SWLD) for spring, September to November, and for the remainder of the year is for below median rainfall, based on a survey of 20 national and international models. Warmer temperatures than normal are expected for spring.

- The Bureau of Meteorology rainfall outlook is indicating a higher than normal chance of reduced rainfall for spring, although the skill of the forecast is poor at this time of year.
- The Bureau of Meteorology temperature outlook for spring is indicating an 80% chance of exceeding median maximum and minimum temperatures. Skill of these outlooks are 65-100%, however frosts still do occur in September and are more likely this month, given the reduction in cloud cover.
- The Bureau's El Niño Alert continues, with El Niño development likely during spring, as well as the development of a positive Indian Ocean dipole. These two climate drivers together will reduce rainfall for the SWLD until November.
- The Bureau is forecasting a series of high pressure systems over Western Australia this spring. This will mean fewer cold fronts, less westerly winds and an increase in warm easterly winds and drier and warmer conditions for spring.
- The next weak cold front is forecast for 3 September with the European Centre for Medium-Range Weather Forecasts (ECMWF) indicating between 5-15mm for the South West Land Division.



UPCOMING EVENTS



Join Gillamii for a

CRANBROOK CROPPY

THURSDAY 21 OF SEPTEMBER 2023



MORNING SESSION

- Direct seeded saltbush pasture systems
Establishment techniques, economic feasibility and utilisation
- Comparing Morava Vetch and Lupin performance as a rotation
A practical comparison of the benefits, costs and management

LUNCH

Sponsored by the Community Bank Tambellup Cranbrook

AFTERNOON SESSION

- Sub-surface Catchments
Utilising sub-surface drains to capture fresh ground water and drought proof farms
- Dam Cover Demonstration
Understanding the on-farm practicalities of using a physical evaporation barrier

SUNDOWNER

It wouldn't be a croppy without a cold one in your hand, join us at the Cranbrook Pub to finish of the day

FREE EVENT
TRANSPORT PROVIDED
EVERYONE WELCOME



**SCHEDULE PROVIDED ON RESERVATION
RESERVATIONS ARE ESSENTIAL**

WWW.TRYBOOKING.COM/CKMOL OR 0427261234



Supporting Your Community
Community Bank
Tambellup Cranbrook



SCHEDULE



9:45

MEET AT THE GILLAMII

140 Climie Street, Cranbrook

Meet at the Gillamii Centre, hop on the bus or self drive to the first site, departing at 10am

10:15

SITE 1: DIRECT SEEDED SALTBUSH PASTURE SYSTEMS

Tomlinson Farm - Salt River Road, Cranbrook

Part of MLA's Producer Demonstration Sites (PDS) Program, this site is one of 6 sites being developed under Gillamii's project 'Productive Saltland Pastures for Southern WA' and is a continuation of our commitment to the remediation of salt-affected land into productive pasture systems for livestock grazing. This PDS Project aims to improve members' knowledge and skills in the establishment, management, and benefits (profitability, productivity, and sustainability) of salt-tolerant forage systems on moderately salt-affected land.

11:45

SITE 2: COMPARING MORAVA VETCH AND LUPIN PERFORMANCE AS A ROTATION

Oliver Farm - White Road, Tambellup

This trial aims to compare the performance, benefits, and limitations of Jurien Lupins and Morava Vetch from a whole system overview. This overview will include comparisons of the management of the crop, disease and weeds, nitrogen fixation, and yield quantity and quality, as well as providing a platform for discussion on market avenues for the harvested grain.

12:30

LUNCH: SPONSORED BY BENDIGO COMMUNITY BANK

Oliver Farm - Yetemerup Road, Tambellup

1:45

SITE 3: SUB-SURFACE CATCHMENTS

Oliver Farm - Yetemerup Road, Tambellup

Funded by the Future Drought Fund, the aim of this demonstration is to inform the local grower network of the potential opportunity to capture fresh sub-surface water using traditional drainage, building increased drought resilience.

3:30

SITE 4: DAM COVER DEMONSTRATION

Pollard Farm - Yeriminup Road, Cranbrook

Funded by the Future Drought Fund, the aim of this demonstration is to improve drought resilience in the farming system by protecting water resources on-farm through dam evaporation mitigation.

4:30

SUNDOWNER

Cranbrook Hotel

We will head back into town to Gillamii and then down the road to to the pub.





WCP Civil



LIFE ON THE _____



_____ **EXHIBITION**

23rd - 29th September 2023

10am - 4pm Daily

3 Dunn Street, Cranbrook

Free Entry

Artwork, Photography and Wildflower Display

Screen Print the Iconic Cranbrook Bell

Drop in any time between 12 pm - 2 pm on the opening and closing days of the exhibition, and bring a fabric item along or use one of the tea towels available!

EQUIPMENT FOR HIRE

Bookings through our website:

<https://www.gillamii.org.au/water-testing-equipment-hire->

Members have free access to hire equipment available at The Gillamii Centre Including:

- Comm Veg Direct Seeder
- Chatfield Tree Planter
- Fox and Cat Traps
- Pottiputki Tree Planters
- Ripper Moulder
- Salinity and pH Water Testing Kit



Chatfield Ezy-planter for hire \$110.00/day for members

ARE YOU A MEMBER FOR 2023?

Check out the details of the Gillamii membership on our website: <https://www.gillamii.org.au/membership>.

Payment

The Gillamii Centre Inc

BSB 633 000

Account 110 006 285

Reference - (Your Trading Name) Membership



Interactive whiteboard in the Bendigo Bank meeting room, which is available for hire

OPEN
LIBRARY

Cranbrook Public Library

Wednesday - Friday

9am - 4.30 pm



Cranbrook Shire Newsletter

Keep up to date with the Shire news!

To subscribe, email

cranbrooknewsletter@gillamii.org.au



Bendigo Bank Meeting Room Hire

Available for community hire!

Seats 30 people

Call 9826 1234 for more information



Gillamii Socials



Twitter: @TheGillamii

Facebook: @Gillamii

Instagram: Gillamii Centre

The Gillamii Centre

Gillamii Autumn 2021 Newsletter
140 Climie Street, Cranbrook, 6321

Postage Paid
AUSTRALIA