

Issue 11 | 1-12-2023

GILLAMII NEWSLETTER

Summer Edition

**Livestock
Management in
23-24 DPIRD**

**What in the ESG?
A look into
Environmental
Social
Governance**

**Project Focus: RDA
Reforestation
Project**

Image Credit: Leith Gulin



INSIDE THIS ISSUE

From the Committee

Chris Tomlinson: Chair's Report

NRM News

Cranbrook Croppy: Gillamii's Spring Field Day

Projects and Applications

Life on the Land Exhibition

For The Members

DPIRD Live Stock Management update 23-24

Environmental Social Governance

Project Focus: RDA Great Southern Reforestation

Member Project Opportunities

DPIRD Seasonal Outlook

Events

UPCOMING EVENTS



- Christmas and Holiday Closure | 22nd December - 16th January
- Balijup Sanctuary Citizen Science | 18th - 22nd January 2024
- EvokeAg Conference | 20th-21st February 2024
- Cranbrook Show | 23rd March 2024

Are you following us?

-  Twitter: @TheGillamii
-  Facebook: @Gillamii
-  Instagram: @TheGillamii

FROM THE COMMITTEE

CHRIS TOMLINSON

I'd like to start by thanking our major sponsors and funders; the Shire of Cranbrook, South Coast Natural Resource Management, the Federal Government's National Landcare Program, Grower Group Alliance, The Bendigo Community Bank Tambellup/Cranbrook, Elders Cranbrook, and State NRM. I would also like to mention DPIRD, Department of Agriculture, Fisheries and Forestry, Meat & Livestock Australia, Grains Research and Development Corporation who are involved in many of our projects. All your support is critical for us to maintain continuous and effective natural resource management in our community, and we thank you for it. We look forward to continuing our great relationships long into the future.

Being part of the Gillamii group for a few years now I was keen to continue to support the group through the role of the Chair. As the way life seems to go for us all it was another busy year; memberships increased, 7 major projects rolling, numerous information days, spring field day, meetings, presentations, representations, and continuous information sharing and reporting. All part of the Gillamii teams' expertise! With our committee there never seems to be a quiet second had, meetings are full of in-depth conversations about projects in action and projects in the making. I think it is exciting to see and hear the broad range of knowledge when the group comes together. The Gillamii future continues to look positive and the impact and support we provide to our community is instrumental.

As everyone knows but it needs to be said again, the energy and passion both Freya and Ashley demonstrate leads the pack. With Hilary's expertise the three of them work hard together to achieve results. I feel I can say on behalf of the rest of the committee and members, you're all wonderful to work with and we admire your professional approach. The Gillamii Centre is a huge asset not only for the Cranbrook Shire but also neighbouring Shires. It's a place of community networking, meeting room facilities, Landcare equipment hire, inclusive community office spaces, town library, information, and display hub and not to forget friendly faces!

I'd like to finish by acknowledging and thanking two of our committee members who will be finishing up with us this year. Ella, thank you for your commitment to Gillamii over the last two years. You bring a wealth of livestock knowledge to our committee meetings which is invaluable to project development and our strategic direction. Thank you and the team at Elders for always supporting our events and initiatives, recently our Cranbrook Croppy field day and the bowls prize tonight, it does not go unnoticed and is always appreciated. We wish you and Jared all the best as you start your own family and look forward to having another young and sustainable farmer growing up in our community.

Now to our next committee member, Shire of Cranbrook representative Phil Horrocks, who after 8 years on our committee has finished his role as Shire President and therefore as shire representative on our committee. We would like to wholeheartedly thank Phil for his advocacy of the group, unique perspective, and never failing to make us laugh at a committee meeting with his dry, kiwi sense of humour. Thank you for always answering our calls, allow us access to your special bushland and giving our staff unconditional support and an honest opinion. We look forward to welcoming our new shire representative in the coming weeks, although they will have big shoes to fill, we are excited at the possibility of less crumbs to vacuum up and a cheaper food and drinks bill at the end of our committee meetings!

Thanks to all the Gillamii members for your involvement in making this organisation what it is today, and we look forward to celebrating the 30-year milestone in 2024.



Chris Tomlinson



Cranbrook Croppy: Gillamii's Spring Field Day 2023

This field day was developed by the Gillamii Centre and has received funding through Meat and Livestock Australia's (MLA) Producer Demonstration Sites Program, the Australian Government's Future Drought Fund (through South Coast NRM), GRDC (lead by the Grower Group Alliance), Bendigo Bank and Elders Cranbrook. The projects featured throughout the field day would not be possible without our incredible host farmers.

On the 21st of September 2023, 40 local producers and industry representatives joined Gillamii for our Cranbrook Croppy 2023 Spring Field Day. The local 'Croppy' was designed to be an informal, inclusive and producer-lead day showcasing several of Gillamii's current trials and demonstrations.

Projects featured included our MLA's Producer Demonstration Sites (PDS) Program 'Direct Seeded Saltbush Pasture Systems', GRDC/GGA'S Grain Legume Project 'Comparing Morava Vetch and Lupin performance as a rotation' and our Future Drought Fund Demonstration Sites 'Sub-surface Catchment Monitoring and Dam Evaporation Covers'. The group enjoyed lunch with a view of the Stirling Ranges courtesy of the Community Bank Tambellup Cranbrook and finished the day at the Cranbrook Pub thanks to Elders Cranbrook, with the sun still shining it was a proper 'Sundowner'.

DIRECTED SEEDDED SALTBUSSH PASTURE SYSTEMS

Under MLA's Producer Demonstration Sites (PDS) Program, this site is one of 6 sites being developed under Gillamii's project 'Productive Saltland Pastures for Southern WA'. This PDS Project aims to improve members' knowledge and skills in the establishment, management, and benefits (profitability, productivity, and sustainability) of salt-tolerant forage systems on moderately salt-affected land.

COMPARING LEGUME PERFORMANCE: VETCH AND LUPINS

Supported by GRDC and lead by the Grower Group Alliance, Gillamii's trial aims to compare the performance, benefits, and limitations of Jurien Lupins and Morava Vetch from a whole system overview. This overview will include comparisons of the management of the crop, disease and weeds, nitrogen fixation, and yield quantity and quality, as well as providing a platform for discussion on market avenues for the harvested grain.

SUB SURFACE CATCHMENT AND DAM COVER DEMONSTRATION

Funded by the Future Drought Fund, supported through South Coast NRM. The aim of these demonstration sites are to inform the local grower network of the potential opportunity to capture fresh sub-surface water using traditional drainage, and protect dam water from evaporation, building increased on-farm drought resilience.

Life on the Land Exhibition: Bloom Festival

As part of Great Southern Treasure’s Bloom Festival celebrations, Gillamii assisted the community in holding the ‘Life on The Land’ Exhibition. The display aimed to reflect on what life on the land means to our rural and agricultural communities.

Featuring a series of oil paintings from local artist Ebony Harris, abstract landscape watercolour paintings by Lesley Brims, and an agricultural photography display by Debbie Christinell, and as always a stunning display of wildflowers and bouquets collected by passionate community members.

On the opening and closing days of the exhibition, local artists Mel and Bina Butcher hosted a fantastic screen printing workshop. The community and visitors of the exhibition were able to print a beautiful stencil of the Cranbrook Bell and Stirling Range. 2024 will mark 50 years since the very first Cranbrook Wildflower Display, held in the Memorial Hall in 1974.



Funding and Applications

As always, Gillamii have been busy seeking resources and funding opportunities. We recently submitted grants to the FRRR Future Drought Fund, RDA Great Southern, and State Natural Resource Management’s Feral Cat Management Grant. The catchment groups are still awaiting the results of the next iteration of the Federal Governments National Landcare Program.

Just in time for Christmas, Gillamii received the news of our State NRM Grant Success for the “SALTdeck Native Revegetation Guide for Saline Areas in WA” project. The [Saltland Genie WebApp](#) contains a set of interactive tools designed to assist land managers to understand salinity and utilise plant-based systems to remediate salt affected land. One of the resources integrated into the Genie is the SALTdeck, containing information on salt-tolerant pasture species and their potential uses. This project will develop a SALTdeck of native Saltland revegetation species for the SW, WA to assist in Saltland remediation. Gillamii was also successful in obtaining support from the GGA Farmanco In-kind program to establish data collection and analysis protocols for Project Officers.

"A PRODUCTIVE, SUSTAINABLE, AND RESILIENT LANDSCAPE"



This map represents our Gillamii members. Some members are outside the area of this map or are not landholders.

The Gillamii Centre was founded in 1994 by a group of passionate individuals who believed that there was a need for a community-based centre to promote and streamline natural resource management and sustainable agriculture initiatives. The Gillamii Centre was named after local resident (1905-1989), Mr Alf Gillam, who held a passion for the conservation of the Cranbrook Bell (*Darwinia meeboldii*), was a founding member of the Cranbrook Conservation Group, and was awarded an Order of Australia medal for his work in conservation.

Today, Gillamii has a large data base of members and like-minded individuals interested in the management of our natural and agricultural resources. Gillamii is based in the Kent Frankland subregion with an operating region covering a total area greater than 450,000 hectares.



Next year marks our 30th Anniversary of operation as an incorporated group. Over this time, a committee of local community members and passionate project officers have steered initiatives that have supported agricultural research and extension, natural resource management, and community engagement.

An incredible amount of resources and funding has been dispersed in our region, resulting in the improvement and protection of biodiversity and ecosystems, soil health and marginal lands, and numerous expertise and collaborations to better the skills and knowledge within our community. We think this is worthy of a celebration, so be sure to watch this space next year.

WORKING WITH YOU

MEMBERSHIP BENEFITS

Our direction is guided by the community, shaping our [Strategic Plan](#). We review established priorities with members at the AGM and throughout the year.

Members receive first priority assistance on project development, advice, and resources.

Gillamii staff are also skilled in assisting members with

- Ecology advice and revegetation based on landholders goals
- Dryland salinity management
- Mapping
- Weed identification and eradication strategies
- Feral animal control, baiting and licensing

Gillamii staff attend industry events, advocate for the region, and are kept up to date with matters that impact the agricultural industry and community. We are able to assist our members in connecting them to information and expertise of interest.

Seasonal newsletter and direct communication on industry opportunities and events.

Members receive a 50% discount upon hiring the Wilson Ripper Moulder, Comveg Direct Seeder, and Chatfield Tree Planter.

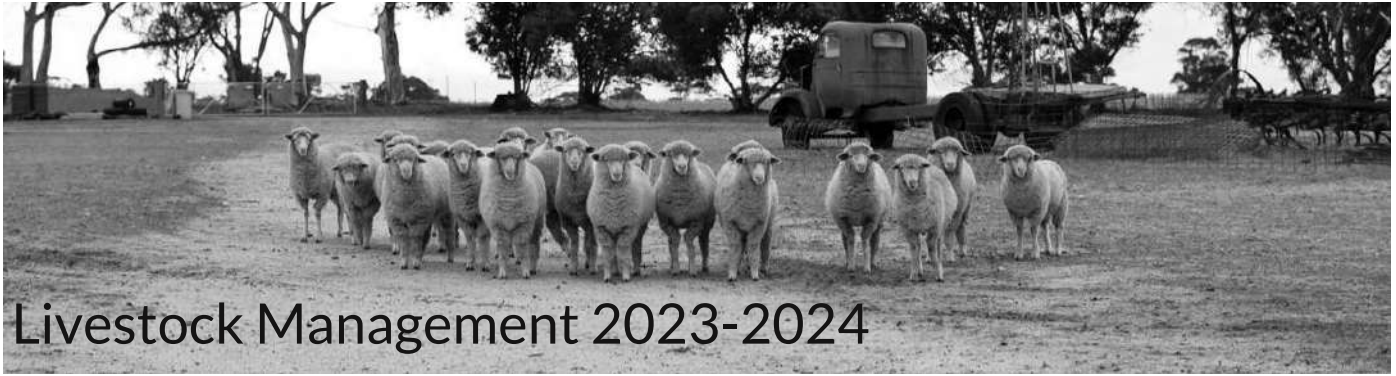
Free hire our rabbit, fox and cat traps, as well as our PottiPutki hand planters and kidney buckets.



RECENT PROJECT OPPORTUNITIES

Gillamii Members have recently worked with us on the following projects

- Establishment of GRDC Grain Legumes Trial, comparing the performance of Vetch and Lupins in our region.
- Funding, expertise, and resources for the development of saltland pasture demonstration sites with 6 members under the MLA Saltland Pastures project.
- Guided by member needs, 3 Future Drought Fund demonstration sites were established including the trial of a Dam Evaporation Cover and Farmbot Monitoring equipment on established sub-surface drainage.
- Carbon Profiles (audits) and reports.
- Response to Expression of Interest for revegetation which included native revegetation, shelter belts, saltbush, and aesthetic plantings.



Livestock Management 2023-2024

Parts of WA have experienced below average rainfall resulting in feed limitations, with below average rainfall also predicted for the coming months. The feed shortage has been further compounded by limited slaughter space and reduced market prices for sheep. Sheep industry economist, John Young, of Farming Systems Analysis Service was commissioned to look at the economics of some key decisions this season, taking into account current seasonal and market conditions. The information provided is of a general nature, and producers should use this in conjunction with advisors and other support resources to formulate a plan specific to their enterprise and financial situation. Read the full report [here](#)

Key points for decision making from now through to the break of next season include:

- Make decisions early. Previous dry seasons have shown that planning and early decision making benefits the business and everyone working in it.
- Have contingency plans for best and worst case scenarios.
- [Seek support](#) when making decisions. Use your network including livestock consultants, farm business advisors, accountants and/or rural financial counsellors to help in the decision making process specific to your enterprise and financial situation.
- Consider your mental health and factor it into decisions made. There is support available for you and your family.
- If stock is a minor contribution to farm income, the best option is likely to sell down to an easily manageable number and concentrate the management focus on the crop enterprise.
- Conduct a [feed budget](#) in November for the December to June period which includes all the sheep that would normally be retained after the coming shearing (spring/early summer shearing).
- It is much cheaper, only requiring half the amount of grain, to maintain weight than allow weight loss and then try to regain later. Therefore, start with low rates of feed early and gradually increase. Note – you may need to start [supplementary feeding](#) much earlier than you normally would.
- Sheep will expend 1 to 2 MJ of energy per day walking when feed is scarce. If [Feed on Offer \(FOO\)](#) is low and quality is poor, then the energy used is not replaced by feed consumed. Consider reducing energy requirement by [confinement feeding](#).
- Joining ewes in [condition score \(CS\)](#) less than 2.3 is an animal welfare risk and a profit risk. Ewe deaths can be very high, which means it is recommended to not mate ewes in less than CS 2.3. Separate low condition score ewes at shearing.
- Ensure the [growth rate of weaners](#) remains at least 1.5 kg/month. This lifts them to a low-risk region and increases survival over summer/autumn after pastures hay off.
- An effective method for minimising the total amount of supplement required is to separate the tail of the mob, for both weaned lambs and ewes, and feed separately. Segregating ewes on CS and allocating feed appropriately will be a high value practice this year.
- With current wool prices, 20% of the cost of extra grain fed for maintenance is recouped in wool income. It doesn't include an impact on staple strength which could be important if the extra supplementary feeding is increasing wool growth during the weakest period of the staple.
- If animals need to be sold, wethers and wether hoggets would be the first to sell, while mature 2.5 to 3.5 year old ewes should be the last group to consider selling.
- For stock that are retained, the highest priority to get any limited green feed are the at-risk young weaners, and ewes too thin for mating (<CS 2.3), while CS 3 ewes being mated to terminals, and those being fattened for sale are the lowest priority for green feed.
- 2024 will be a high value year for [pregnancy scanning](#) the ewes being mated, so the empty ewes can be sold.

Environmental Social Governance and Agriculture

“The strength of an organisations ESG policies is going to be a key factor in their success going forward. The Agricultural Industry is at the core of this transition and that’s quite normal as; Agriculture has historically laid the foundation of society building, governments formation, and was always interlinked with Environment.”



ESG stands for Environmental, Social, and Governance. At its heart, ESG aims to reduce environmental footprints (negative environmental impacts from consuming resources and producing waste) and increase the positive impacts that people, businesses, or operations have on communities and their environments. KPMG's leader of corporate ESG strategy Robert Poole described the concept as a set of guidelines governing how businesses look after the environment and their people.

The problem, however, is that ESG guidelines have no national, or global, set of standards and are instead open to interpretation by individual businesses. With more than 30 different industry ESG models currently in Australia, including frameworks from the beef, dairy, and sheep sectors, Mr Poole said the onus of proving a positive ESG status could still fall to individual farmers. Agricultural market analyst Matt Dalgleish said fulfilling certain ESG criteria could be the difference between entry and exclusion from export markets. It is anticipated in the future that more sources of capital will be available for organisations and products that meet global

environmental, social and governance standards (ESG). A sustainability framework is needed to meet trading partner obligations, and to make it easier for farmers to engage with new and emerging environmental markets.

The Australian Agricultural Sustainability Framework (AASF) has been created to communicate the sustainability status and goals of the Australian agricultural sector to domestic and global communities and markets. It operates at national not farm level. Farmers will not report against the AASF, but they will be able to use it to understand finance, supply chain and market expectations about sustainability and ESG reporting. So far development of AASF has engaged with more than 1300 farmers, finance, retail and supply chain representatives and other stakeholders.

There is confusion about what sustainability means and how it can be achieved. The intent is to assist farmers to continuously improve on-farm management practices and reporting, ensuring consistency and cohesion across multiple existing schemes, programs and other initiatives.

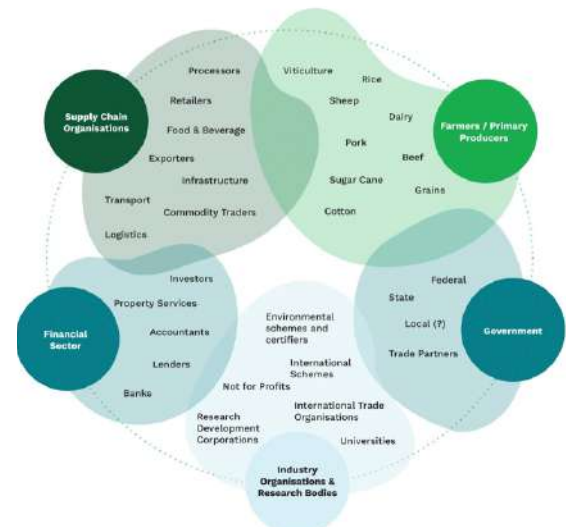
Where to from here?

This space is developing quickly, and organisations like Gillamii and DPIRD will likely play a role in assisting landholders in understand ESG and Agriculture moving forward.

DPIRD have a list of ESG resources available: [here](https://www.agric.wa.gov.au/esg-resources) (<https://www.agric.wa.gov.au/esg-resources>).

Article Resources:

1. [ABC “From emissions to employment, ESG could change the way Australians farm”](#)
2. [National Farmers Federation “Australian Agricultural Sustainability Framework”](#)
3. [DPIRD “ESG: Is your business ready for the future?”](#)





PROJECT FOCUS

RDA GREAT SOUTHERN: REFORESTATION

The aim of this project was to increase tree numbers in a suitable controlled area. The scope of work involved coordination by the Gillamii Centre who worked with the local community to establish trees and ensure positive outcomes for environmental sustainability within the region.

RDA Great Southern provided funding to achieve this one-year program, aiming to plant approximately 7,800 trees within the Great Southern region, with a maximum of 600 seedlings per site.

Project Achievements

- 18,688 seedlings planted: During the development of this project Gillamii received a donation of 2,496 seedlings from Carbon Positive Australia and three project land managers purchased a further 8,416 seedlings for their project sites
- 29 Hectares of Degraded Land Revegetated: Sites such as waterways, saline areas, community spaces, tree belts, driveways and honey production were revegetated
- 11 Farming Families & 1 Community Group Engaged as Project Partners: Funding provided by RDA Great Southern and Carbon Positive Australia allowed Gillamii to work with 11 local farming families and the Cranbrook Golf Club to establish the 18,688 seedlings

Snapshot

Project Period

2023

Project Value

\$17,000

Project Officer

Freya and Ash

Funding

RDA Great
Southern

Future Project updates can be found on our [website](#)

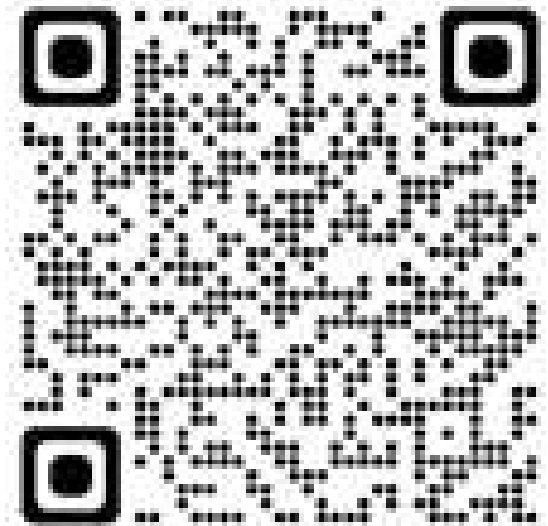


MEMBER PROJECT OPPORTUNITIES

GRDC GRAIN LEGUMES SURVEY

Grain legumes currently contribute in a small and diminishing way to the profitability of Western Australian farming systems. Analysis indicates that farmers are aware of the benefits of growing a legume in their rotation but have concerns about pulse reliability and profitability and need more confidence in their consistent production. Please let the Grower Group Alliance know about your opinions on grain legumes.

We know everyone loves a good survey (not!), but local information and input is highly valuable so if you have the time to spare, click the link or use the QR code and answer away!



www.surveymonkey.com/r/7WF8BY6

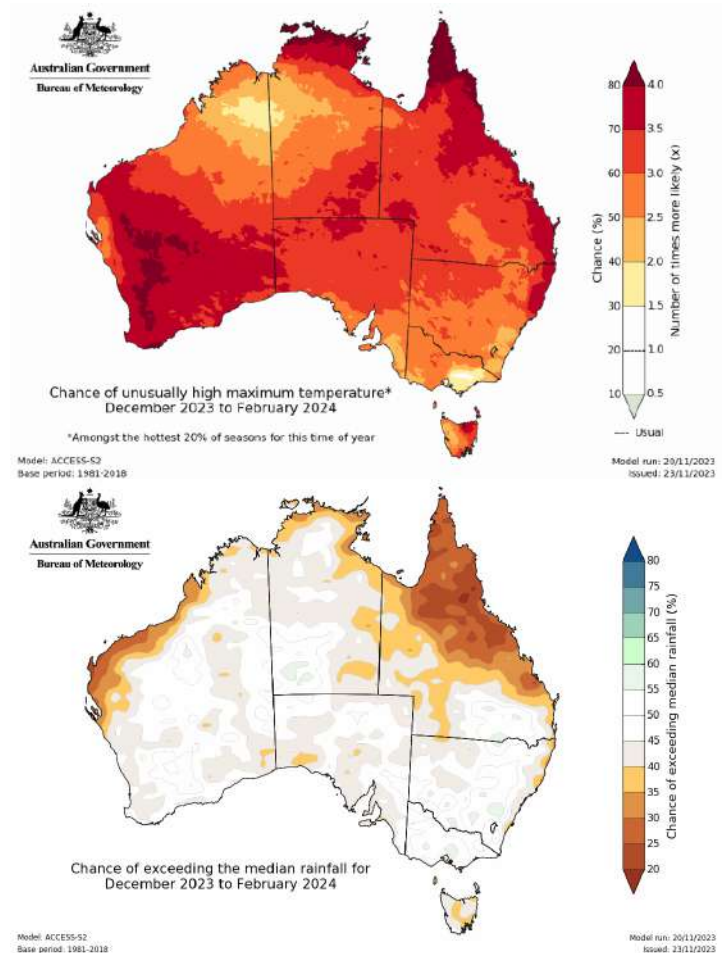


Seasonal Climate Outlook

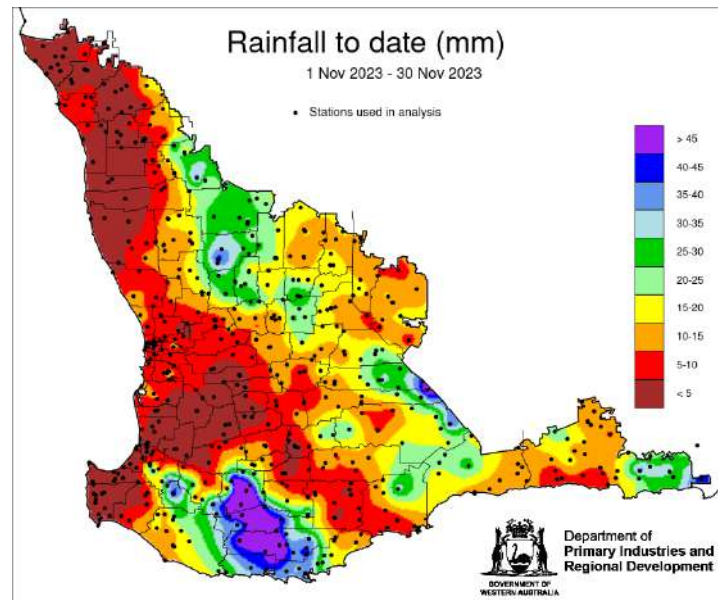
DPIRD Season Outlook

Rainfall outlook for the South West Land Division for the next 3 months November 2023 to January 2023, is for below median rainfall, based on a survey of 20 national and international models. Warmer temperatures than normal are also expected.

- The Bureau of Meteorology's ACCESS model indicates that there is a 50 to 80% chance of unusually high minimum and maximum temperatures for November 2023 to January 2024. Meaning that the next 3 months will be amongst the hottest 20% of seasons for this time of the year.
- Rainfall outlooks for December 2023 to March 2024 indicate below median rainfall is likely.
- An El Niño is present in the Pacific Ocean and is expected to last until at least March 2024. El Niño's have some influence on summer temperatures in the South West Land Division (SWLD), with usually warmer temperatures than normal.
- A positive Indian Ocean Dipole (IOD) has developed in the Indian Ocean. This event is unusual, as models expect it to remain in place until January 2024. IOD events usually end in October, when the Australian monsoon season begins. Past positive IOD means below average rainfall and warmer maximum and minimum spring temperatures for the SWLD.
- When a positive IOD and El Niño occur together, their drying effect is typically stronger and more widespread across Australia.



For December and December to February, large parts of inland Australia have a near equal chance of above or below average rainfall. However, if above average rainfall occurs, it is unlikely to be widespread.



UPCOMING EVENTS



TAKE THE CHALLENGE AND GROW THE BIGGEST PUMPKIN FOR THE 2024 CRANBROOK SHOW!

Drop off & judging to happen at the Gillamii Stall on the day of the show

| Prize | ADULTS (16+) | CHILDREN (0-16) |
|-----------|---------------------------------|---------------------------------|
| 1st Prize | Largest Pumpkin (circumference) | Largest Pumpkin (circumference) |
| 2nd Prize | Heaviest Pumpkin | Heaviest Pumpkin |

Prizes Include

Child (1st) - \$100 Voucher to Albany Indoor Adventures
Adult (1st) - \$100 Voucher to Monty's Leap Restaurant
Child (2nd) - Yeti Drink Bottle
Adult (2nd) - Yeti Drink Mug

**Giant pumpkin seeds will be provided to the schools, if you don't have your own seeds pop into our office to grab one before summer!
(1 seed per person)**



Contact Freya at Gillamii for any further information 0427500374

Bandicoots, Birds and Eco-restoration:

Invitation to Participate in A Citizen Science Eco-Camp at Balijup near Cranbrook



1pm Thurs 18 Jan to 12 noon Monday 22 January 2024

Venue; Balijup Sanctuary - near 704 Nunijup Road, Tenterden, near Cranbrook. Camping at Lake Nunijup Hall, Stockyard Road, Tenterden.

You are invited to participate in this four-day event of Bandicoot and fauna surveying and other environmental monitoring on Balijup, a special property forming part of the Gondwana Link conservation program. Registration essential-

There will be a cost for staying at Lake Nunijup (\$30) and participants will need to supply own food/camping equipment. Come for all or part of the event. Participants will camp at nearby Lake Nunijup campground (Stockyard Rd, 19.7km from Albany Highway, Kendenup).

Participants will work with wildlife ecologist Joe Porter, Basil Schur of Green Skills Denmark, and bird observers, Andrew and Angela Dickinson. The event will provide a range of citizen science monitoring activities at and near Balijup farm including bandicoot re-trapping, phascogale monitoring, bird & bushland surveying.

Green Skills, partnering with the Hordacre family, has established a 111ha fenced fauna conservation sanctuary in Wandoo & Jarrah forest at Balijup (see <https://chuffed.org/project/balijup>)

**For further information and registration: contact Basil Schur at Green Skills Denmark
0429481019 Email bschur@greenskills.org.au**

This project is supported by support from the Conservation Council of WA, and funding from the Koorabup Trust. The project is also part of Green Skills' conservation activities supported through the Koorabup Trust It also forms part of the South Coast Festival of Birds and Biodiversity. The Balijup project has also been supported by the Hordacre/Vanderbyl family, the WA State Government's NRM program, the Gillamii Centre, The Koorabup Trust, Lotterywest, Conservation Council of WA, Birdlife WA, Parks and Wildlife Service of the Dept of BCA, and UWA Albany and many individuals and volunteers



EXCEPTIONAL
EDGE

20 - 21
FEBRUARY
2024

PERTH,
WESTERN
AUSTRALIA

AgriFutures®
evoke AG®

TICKETS ON SALE NOW
EVOKEAG.COM



GGA Promotion for the Grower Group Network

Members of Gillamii are entitled to use promo code GGAMEMBER24

This will bring a Producer Delegate ticket type down from \$770 to \$550 per person. Producers will need to enter a PIC [Producer ID code or their ABN] to complete the ticketing steps.

The 2024 program looks brilliant: Check it out for yourself

<https://www.evokeag.com/evokeag-2024/2024-program>



GILLAMII CENTRE CHRISTMAS HOURS

CLOSED

23 DECEMBER 2023 - 16 JANUARY 2024

Have a Merry Christmas & a Happy New Year

EQUIPMENT FOR HIRE

Bookings through our website:
<https://www.gillamii.org.au/water-testing-equipment-hire->

Members have free access to hire equipment available at The Gillamii Centre Including:

- Comm Veg Direct Seeder
- Chatfield Tree Planter
- Fox and Cat Traps
- Pottiputki Tree Planters
- Ripper Moulder
- Salinity and pH Water Testing Kit



Chatfield Ezy-planter for hire \$110.00/day for members

ARE YOU A MEMBER FOR 2024?

Check out the details of the Gillamii membership on our website: <https://www.gillamii.org.au/membership>.

Payment
The Gillamii Centre Inc
BSB 633 000
Account 110 006 285
Reference - (Your Trading Name) Membership



Interactive whiteboard in the Bendigo Bank meeting room, which is available for hire

OPEN
LIBRARY

Cranbrook Public Library
Wednesday - Friday
9am - 4.30 pm



Cranbrook Shire Newsletter
Keep up to date with the Shire news!
To subscribe, email
cranbrooknewsletter@gillamii.org.au



Bendigo Bank Meeting Room Hire
Available for community hire!
Seats 30 people
Call 9826 1234 for more information



Gillamii Socials



Twitter: @TheGillamii
Facebook: @Gillamii
Instagram: Gillamii Centre

The Gillamii Centre

Gillamii Autumn 2021 Newsletter
140 Climie Street, Cranbrook, 6321

Postage Paid
AUSTRALIA